

### Directional Antenna, 10.1 to 11.7 GHz, 41 dBi, 120 cm, (4 feet) Solid Dish

Solid Dish antenna 120 cm (4 feet) with 41 dBi gain at 10-11 GHz band, heavy duty mounting kit and adjustable supporting arm included.

QAD 1141 -120 SD has deep reflector dish and massive bracket which allows precise adjustment in both directions. Whole antenna system has extreme wind stability.



### Radio Specifications

Frequency range	10.1 – 11.7 GHz
Gain – High band	40.0 ± 0.5 dBi
Gain – High band	41.0 ± 0.5 dBi
Side lobe level	≤ 15 dB
Front to back ratio	≥ 61 dB
Beamwidth-3 dB	1.5°
Polarization	Vertical / Horizontal
Return loss (VSWR)	≥ 18 dB
ETSI Standard	EN 302-217-4-2 v1.5.1 Class 2

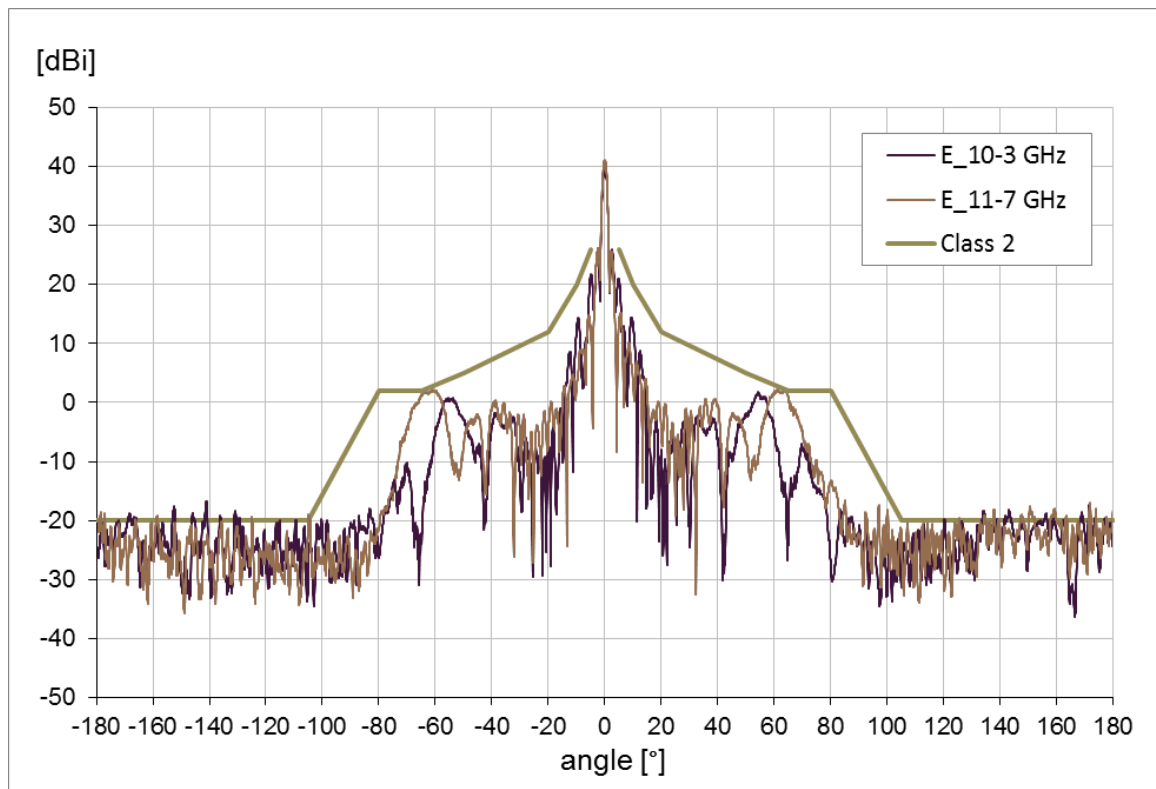
### Mechanical Specifications

Parabola material	Aluminum Alloy
Size	120 cm (4 ')
Depth	44.0 cm
Radome material	UV resistant plastic ABS
Input/output	Circular waveguide 19 mm
Mast size allowed	80 - 120 mm
Maat size allowed (with adjustable wind bracket)	60 - 80 mm
Operational wind load	110 km/h (130 mph)
Operational wind load (with adjustable wind bracket)	140 km/h (130 mph)
Survival wind load	210 km/h (87 mph)
Antenna weight	16.5 Kg (36.35 lbs.)
Mounting Kit weight	14.9 Kg (32.85 lbs.)
Pack options	6 pack / 2 pack

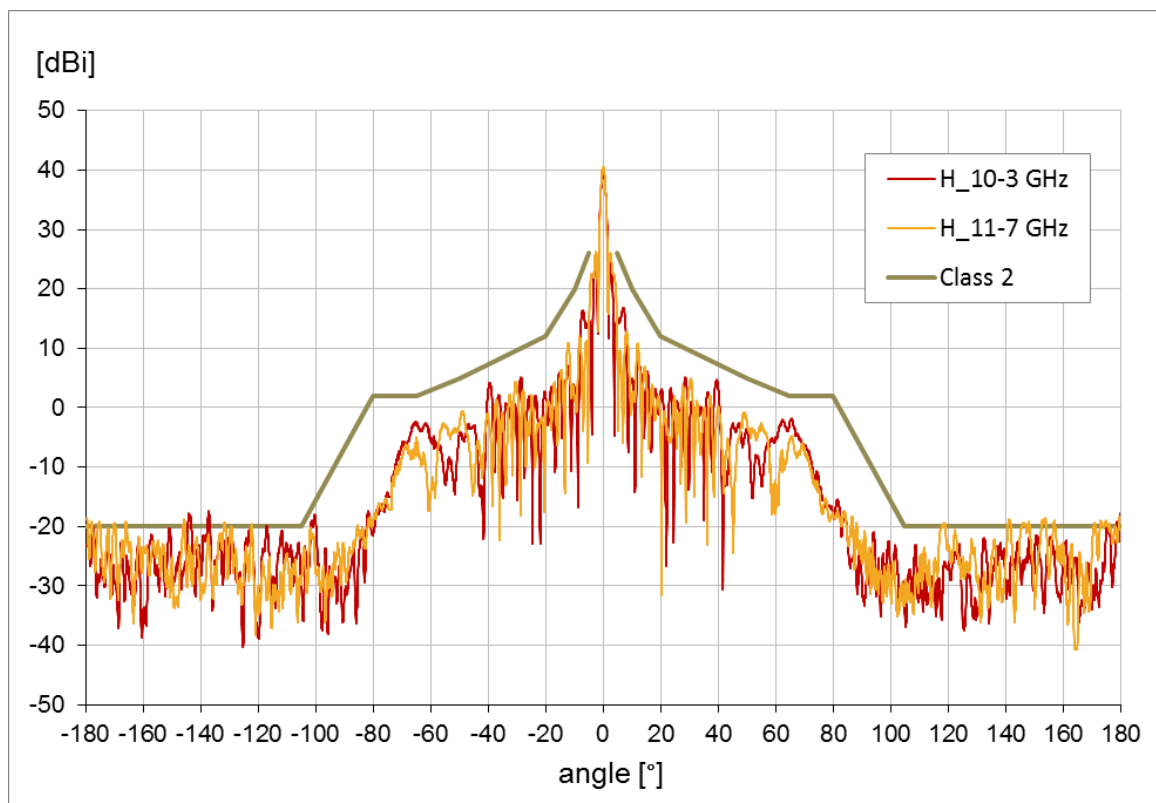


The antenna is supplied together with a massive bracket that allows easy mounting on a mast. Bracket can be installed separately on the mast. Subsequently, can be simply hang up the antenna with microwave unit into it. Antenna bracket allows fine setting elevation ± 15° and azimuth ± 7°. **It is necessary to use an adjustable wind bracing kit for mounting on the mast with diameter 60 to 80 mm.**

## Radiation Patterns:

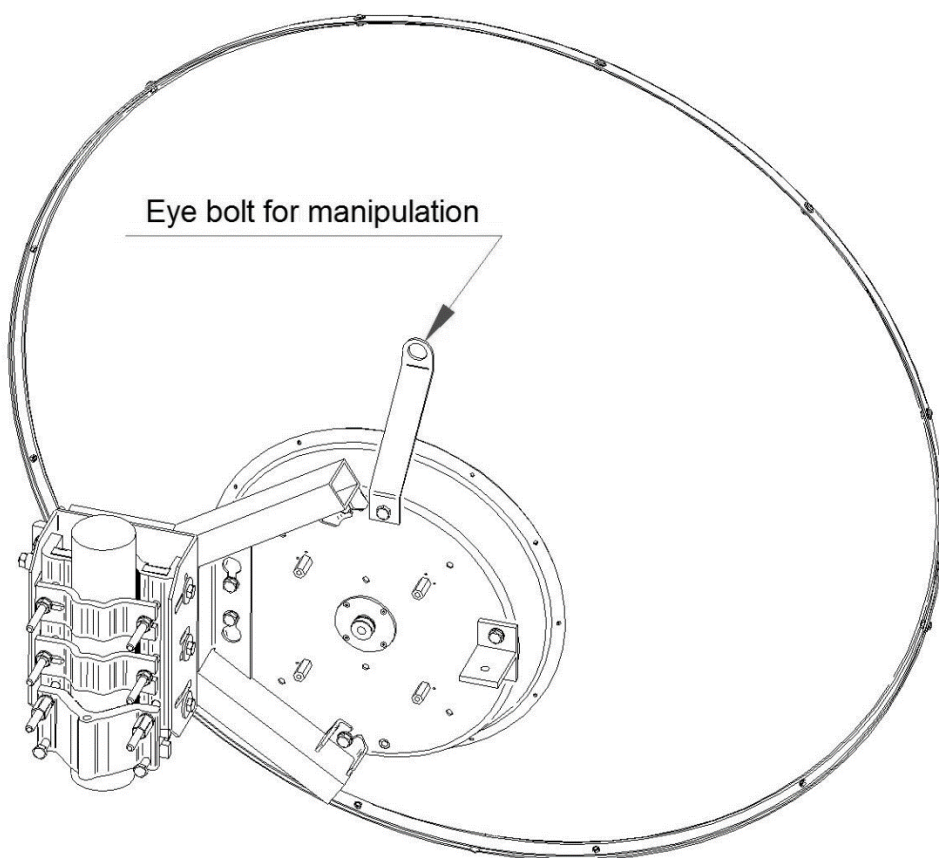
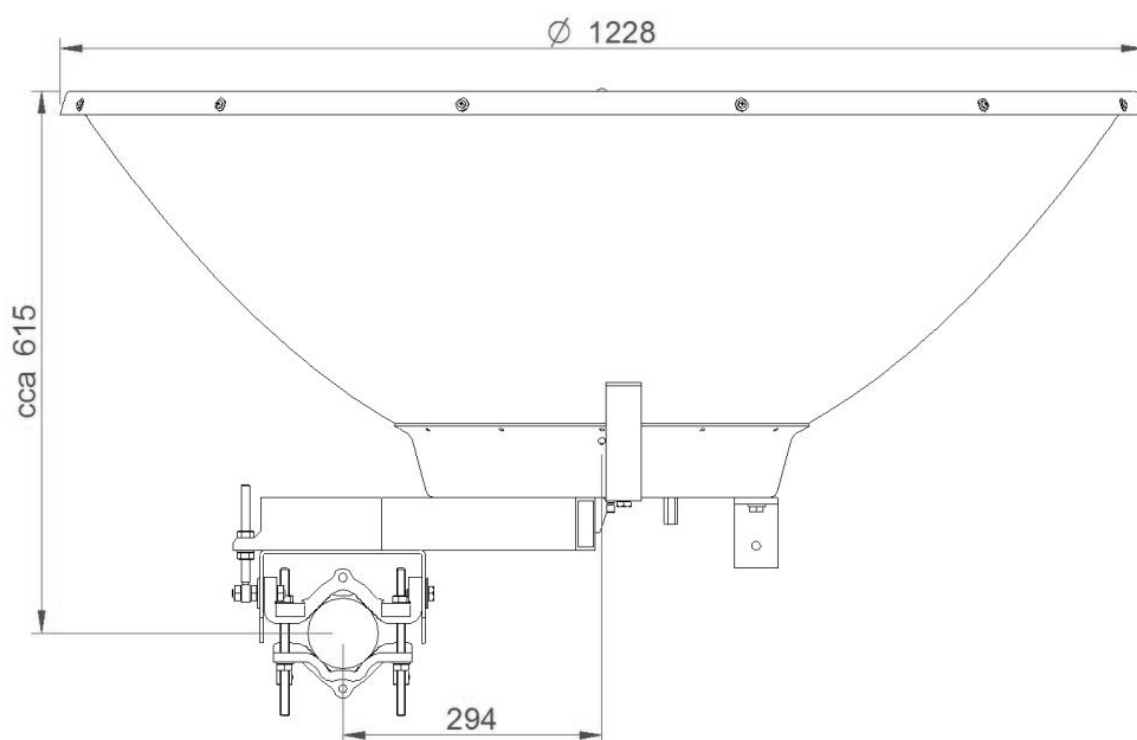


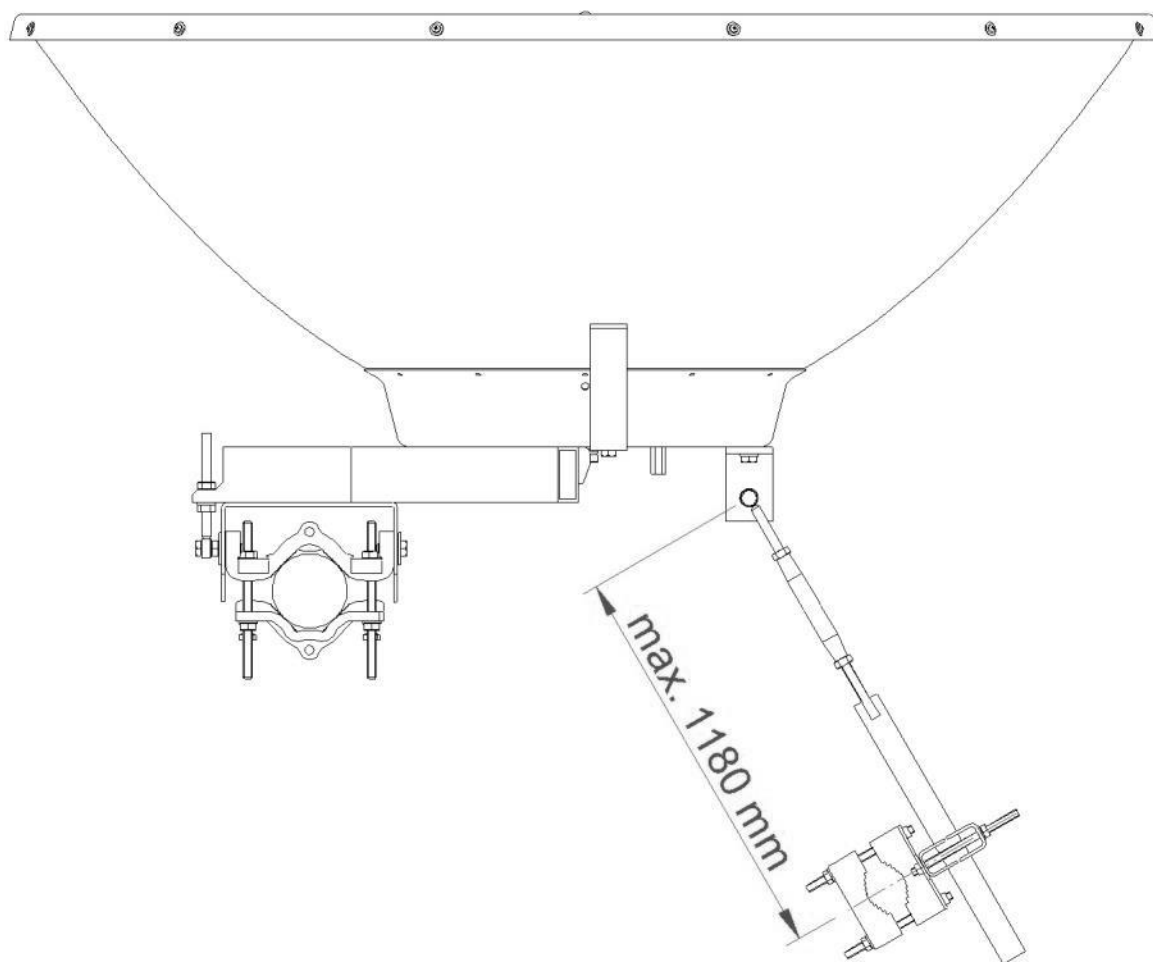
E-Plane Pattern (QAD 1141-120 SD)



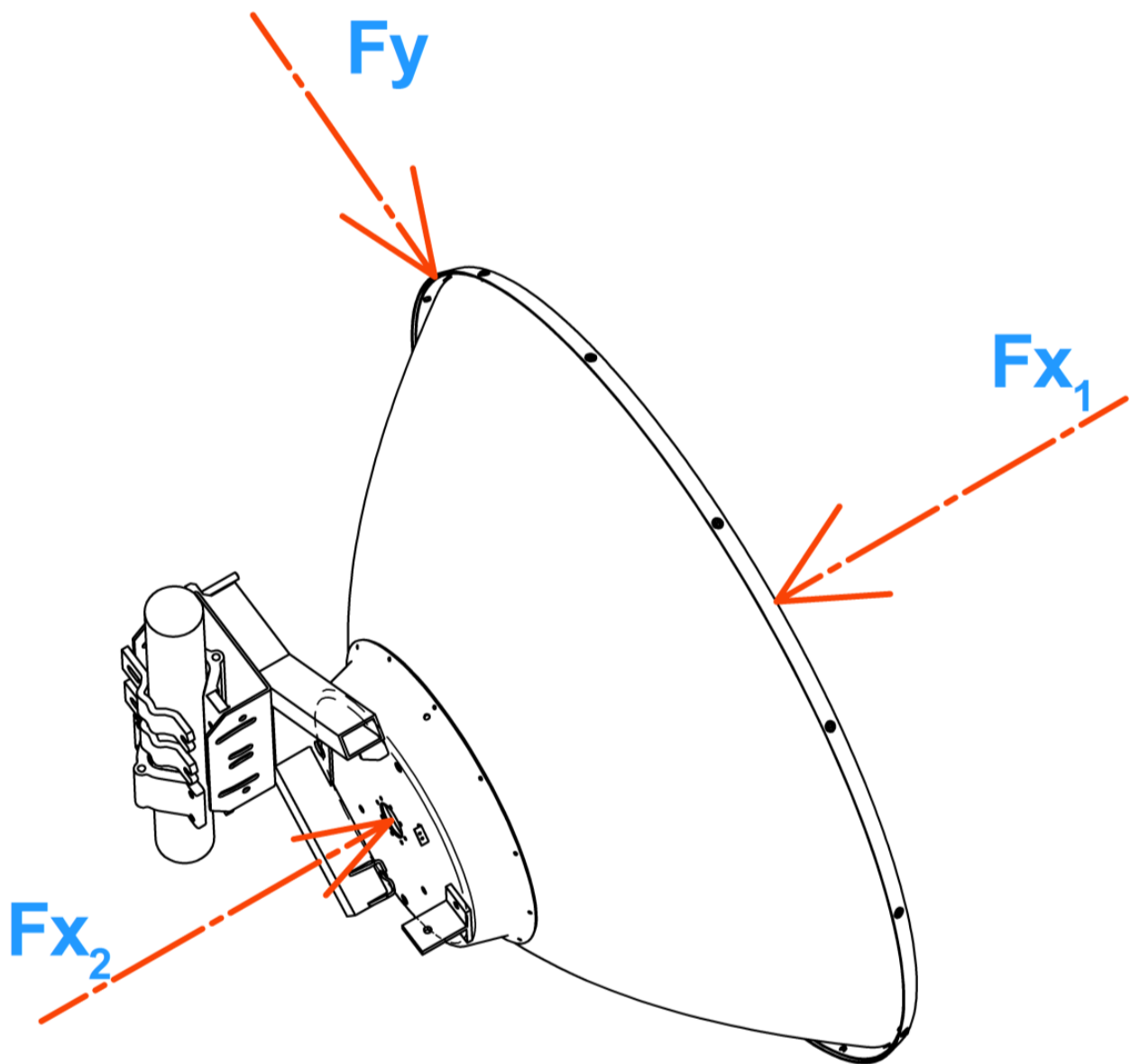
H-Plane Pattern (QAD 1141-120 SD)

## Outline Dimensions:





## Wind Load:



## Wind Load at 200 km/h (125 mph)

Direction	Force
FX1	2696 N (607 lbf)
FX2	2186 N (492 lbf)
FY	247 N (56 lbf)